

# LITIGATION IS A CONSTANT THREAT FOR DOCTORS

*Risk management education  
can help mitigate your risk*



## PHYSICIAN

**2012 RISK MANAGEMENT PROGRAM** – *Case in Point* Home Study Course | Medical Record Documentation | Mock Deposition—  
Preparing for the Main Event | Risk Issues in Anti-Coagulation Therapy | Big Problem: Risk Issues in Treating the Obese Patient  
SPECIALTY SPECIFICS: Primary Care, Ophthalmology, Cardiology, OB/GYN, Pediatrics, Emergency Medicine—Duty and Responsibility  
in Transitions of Care, Surgery: Special Closed Claim Study Report

February 2012

Dear Colleague:


Doctors work long and hard to provide the finest health care possible. Patients entrust their lives to you and, as a dedicated healer, you are committed to helping them stay healthy. Despite good medicine and your best efforts, we live in a litigious society, where the risk of a claim or lawsuit is a constant threat for Doctors. MEDICAL MUTUAL is pleased to offer our 2012 risk management program, designed to help you mitigate your liability risk.

Please take a few minutes to review this booklet. You will find complete information on all of the topics being offered, including course objectives, dates and locations. A registration form and postage-paid envelope have been provided for your convenience. You also have the option of registering online at [mmlis.com](http://mmlis.com), where you can find the most current program information and driving directions to each listed location.

Please note that telephone registrations are *not* accepted. Attendance at specific sessions is limited, so register as soon as possible to ensure a place at your preferred location and date.

If you have any questions or need more information, please call our Risk Management Services Department at 410-785-0050 or 800-492-0193. We look forward to seeing you at our 2012 risk management programs.

Sincerely,



George S. Malouf, Jr., M.D.  
Chair of the Board

## WHY ATTEND a Risk Management Education Program?

**Have you considered all the benefits of attending one of our education programs?** Each program is presented by knowledgeable medical, legal and claims management experts. By participating in one of these programs, you can:

- Receive a 5% premium discount
- Earn CME Credits
- Minimize your potential liability exposure
- Improve the quality of patient care
- Eliminate problem areas within your practice
- Protect your practice and professional reputation

# CASE IN POINT HOME STUDY COURSE

*Authored by members of MEDICAL MUTUAL's risk management, claims, communications, policy information and legal departments.*

*Case in Point* is a publication consisting of closed medical malpractice claims focusing on the larger issue of communication within the health care setting. The cases serve as illustrations of how good communication might have made the difference in a patient's ultimate outcome or the defensibility of a claim.

## HOW CASE IN POINT WORKS:

Interested Physicians can register for *Case in Point* by using the code **CIPHS2012** on the registration form found in the back of this brochure. The cost is \$50 PER PERSON.

Participants will receive a copy of the *Case in Point* book by mail. To satisfy the requirements of the course, participants must read the book and complete a short post-test at the conclusion. Participants will also be asked to complete an evaluation form. The finished post-test and evaluation form should be sent back to MEDICAL MUTUAL in the postage-paid envelope included with the book.

Completed tests and evaluations are due no later than **September 14, 2012**. The cut-off date to register for *Case in Point* is **August 17, 2012**.

## ACCREDITATION STATEMENT:

MEDICAL MUTUAL Liability Insurance Society of Maryland is accredited by the Accreditation Council for Continuing Medical Education (ACCME) to provide continuing medical education for Physicians.

## DESIGNATION STATEMENT:

MEDICAL MUTUAL Liability Insurance Society of Maryland designates this enduring material for a maximum of *two (2) AMA PRA Category 1 Credit(s)*.<sup>™</sup> Physicians should claim only the credit commensurate with the extent of their participation in the activity.

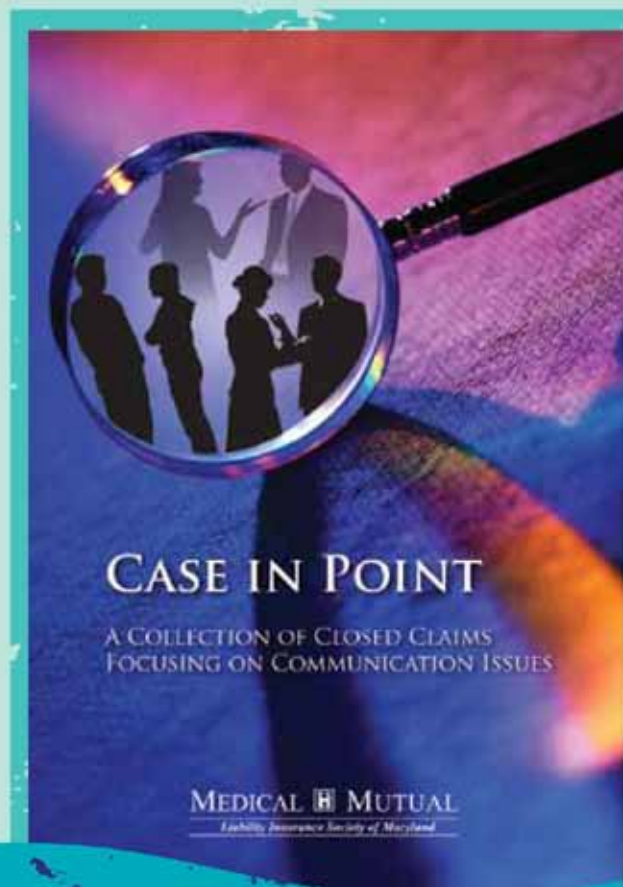
Participants who successfully complete this course will receive the same 5% premium discount that they would receive for attending a live activity. **Note: If you completed *Case in Point* in 2010 or 2011, you are not eligible to receive a premium discount or CME Credits by taking it again in 2012.**

## OBJECTIVES:

Upon completion of this enduring material, participants will be better able to:

- Understand how communication breakdowns can lead to patient injury and medical malpractice lawsuits
- Gain added insight into the prevention of communication errors
- Implement strategies to improve communication skills

*Case In Point* Risk Management Publication  
Code: **CIPHS2012**



# MEDICAL RECORD DOCUMENTATION

*Presented by John Steinberg, M.D. and Conrad Varner, Esquire*

This course in medical records skills enhancement will illustrate the common pitfalls encountered by practitioners and provide steps to avoid them. Use of hand-written, dictated and transcribed, and electronic medical records systems will be addressed. Common problems related to content, legibility and completeness will be illustrated. Additionally, the role of medical record documentation in managing clinical practice, malpractice actions and disciplinary matters will also be presented.

*Dr. Steinberg is Board Certified in Addiction Medicine by the American Board of Addiction Medicine. He is in private practice in Randallstown, MD. Dr. Steinberg has lectured both nationally and internationally on addiction and other medical topics and provides assistance to Physicians related to documentation issues.*

*Conrad Varner, Esquire, is the founding partner of Varner & Goundry, P.C. and is a trial attorney specializing in medical negligence defense and administrative law as it relates to the privileges and licensing of Physicians in the State of Maryland. Mr. Varner is a Fellow in the Litigation Counsel of America and has been recognized as a Maryland Super Lawyer.*

DATE	CODE	FACILITY	LOCATION
Thu, March 1	4678	MEDICAL MUTUAL	Hunt Valley
Tue, March 13	4679	Holiday Inn & Conf. Cntr.	Frederick
Thu, March 22	4680	Chase Suite Hotel	Rockville
Tue, April 3	4681	DoubleTree Hotel	Annapolis
Thu, April 19	4682	Western MD Regional Medical Center	Cumberland
Thu, May 10	4683	Peninsula Regional Med. Cntr.	Salisbury
Wed, May 23	4684	MEDICAL MUTUAL	Hunt Valley
Tue, June 12	4685	Upper Chesapeake Med. Cntr.	Bel Air
Tue, August 28	4686	Holy Cross Hospital	Silver Spring

Each program begins promptly at 6:00 p.m. and ends at 8:00 p.m. To qualify for the premium discount and CME Credits, you must participate in the entire program.

## OBJECTIVES:

Upon completion of this live activity, participants will be better able to:

- Understand the proper use and organization of subjective, objective and integrative data in the medical record
- Document key components of the medical record such as allergic status, medications, and physical findings
- Avoid "cut and paste" errors in EMR templates
- Ensure adequate content in documentation to improve tracking of patient management issues and support for diagnoses made and treatment options selected



# MOCK DEPOSITION— PREPARING FOR THE MAIN EVENT

*Presented by attorneys from the law firm of Armstrong, Donohue, Ceppos, Vaughan & Rhoades, Chtd.*

Evidence suggests that what happens at deposition goes a long way in determining the final outcome of a medical malpractice lawsuit. This two-hour program will assist Physicians in successfully navigating their way through the uncertain waters of the deposition process. The attorney presenters will utilize the mock deposition format to portray actual case scenarios and legal principles and demonstrate how Physician testimony at deposition can hurt or harm their chances at trial.

*Since its inception, the focus of the law firm of Armstrong, Donohue, Ceppos, Vaughan & Rhoades has been primarily on the defense of medical negligence cases, representing countless Physicians across the broadest possible spectrum of medical specialties. Along with their defense work, the firm has provided educational sessions on a number of medico-legal topics.*

DATE	CODE	FACILITY	LOCATION
Tue, March 20	4662	Best Western Hotel	Lanham
Thu, March 29	4663	Peninsula Regional Med. Cntr.	Salisbury
Mon, April 16	4664	MEDICAL MUTUAL	Hunt Valley
Wed, April 18	4665	Comfort Inn	Easton
Mon, April 30	4666	Upper Chesapeake Med. Cntr.	Bel Air
Wed, May 30	4667	St. Mary's Hospital	Leonardtown
Tue, June 5	4668	Calvert Memorial Hospital	Prince Frederick
Thu, June 28	4669	Western MD Regional Medical Center	Cumberland
Wed, July 25	4670	Chester River Hospital Center	Chestertown
Mon, July 30	4671	The Universities at Shady Grove	Rockville
Wed, August 1	4672	The Meeting House	Columbia
Thu, August 2	4673	Clarion Inn	Waldorf
Mon, August 13	4674	DoubleTree Hotel	Annapolis
Wed, August 22	4675	Laurel Regional Hospital	Laurel
Tue, Sept. 4	4676	MEDICAL MUTUAL	Hunt Valley
Thu, Sept. 27	4677	Hagerstown Hotel & Convention Center	Hagerstown

Each program begins promptly at 6:00 p.m. and ends at 8:00 p.m. To qualify for the premium discount and CME Credits, you must participate in the entire program.

## OBJECTIVES:

Upon completion of this live activity, participants will be better able to:

- Understand the importance of the deposition to the larger malpractice picture
- Identify deposition DOs and DON'Ts
- Discuss litigation stressors in preparing for the deposition

# RISK ISSUES IN ANTI-COAGULATION THERAPY

*Presented by Edwin L. Keating, III, Esquire and Siobhan Keenan, Esquire of Baxter, Baker, Sidle, Conn & Jones, P.A.*

This new presentation will discuss trends in medical malpractice involving anti-coagulation therapy and prophylaxis. Cautionary tales from actual closed cases will be utilized to illustrate best practices and practice management techniques that can minimize your risk of a negligence action arising out of the use of anti-coagulation therapy.

*Edwin L. Keating, III, Esquire, is a partner of the firm. His practice focuses on representing health care providers on a variety of issues including the defense of medical malpractice claims and licensing and credentialing matters.*

*Siobhan Keenan, Esquire, practices in the area of general civil litigation with special emphasis on commercial litigation, toxic torts and medical malpractice.*

DATE	CODE	FACILITY	LOCATION
Mon, March 19	4687	Laurel Regional Hospital	Laurel
Wed, April 4	4688	MEDICAL MUTUAL	Hunt Valley
Tue, May 1	4689	Chase Suite Hotel	Rockville
Mon, June 18	4690	Holy Cross Hospital	Silver Spring
Wed, August 15	4691	Suburban Hospital	Bethesda
Tue, Sept. 11	4692	MEDICAL MUTUAL	Hunt Valley

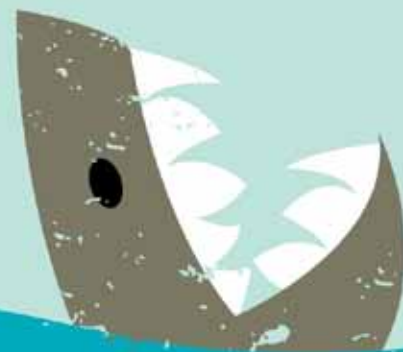
Each program begins promptly at 6:00 p.m. and ends at 8:00 p.m. To qualify for the premium discount and CME Credits, you must participate in the entire program.

## OBJECTIVES:

Upon completion of this live activity, participants will be better able to:

- Implement proper documentation and monitoring of patient receiving anti-coagulation therapy
- Understand the importance of communication with patients and other health care providers when administering anti-coagulation therapy
- Identify best practices and the importance of obtaining informed consent when administering or changing these therapies

DON'T FORGET  
YOU CAN REGISTER  
ONLINE AT  
**MMLIS.COM**



# BIG PROBLEM: RISK ISSUES IN TREATING THE OBESE PATIENT

*Presented by George Bone, M.D.*

The obesity epidemic has become a major area of concern in the United States. The obese patient presents additional challenges to Physicians and impacts their overall care. This program is designed to provide guidance on ways to optimize the medical care of these patients by addressing their special health care needs.

*Dr. Bone has more than 32 years of experience in the private practice of Internal Medicine. He is an entrepreneur in medical practice integration and has served on several state governmental advisory bodies. He is a past president of MedChi, the Maryland State Medical Society, and currently serves on the Maryland Health Services Cost Review Commission.*

## OBJECTIVES:

Upon completion of this live activity, participants will be better able to:

- Identify the key elements of negligence in the care of the obese patient
- Describe the nutritional risks associated with obesity
- Implement strategies to reduce the malpractice burden of obesity

DATE	CODE	FACILITY	LOCATION
Wed, March 28	4693	Comfort Inn	Easton
Tue, April 17	4694	Holiday Inn & Conf. Cntr.	Frederick
Wed, May 2	4695	Union Hospital	Elkton
Tue, May 15	4696	Suburban Hospital	Bethesda
Tue, June 26	4697	MEDICAL MUTUAL	Hunt Valley
Mon, August 27	4698	Calvert Memorial Hospital	Prince Frederick

Each program begins promptly at 6:00 p.m. and ends at 8:00 p.m. To qualify for the premium discount and CME Credits, you must participate in the entire program.



## PRIMARY CARE

*Presented by Daniel Kohn, M.D., Robert Roby, M.D., and Gregg Pritchard, MEDICAL MUTUAL Claims Representative*

In today's litigious environment, the risk of being involved in a medical malpractice lawsuit is an ongoing concern. An understanding of these liability risks is essential and serves to aid in establishing useful strategies to prevent their occurrence. This new program will take a look at current data involving a large cohort of closed claims and include an interactive discussion of a series of case scenarios.

DATE	CODE	FACILITY	LOCATION
Tue, March 6	4699	Holy Cross Hospital	Silver Spring
Mon, April 9	4700	MEDICAL MUTUAL	Hunt Valley
Mon, May 14	4701	Best Western Hotel	Lanham
Wed, June 13	4702	MEDICAL MUTUAL	Hunt Valley
Mon, August 6	4703	Holiday Inn & Conf. Cntr.	Frederick
Thu, August 16	4704	Peninsula Regional Med. Cntr.	Salisbury
Thu, August 23	4705	Western MD Regional Medical Center	Cumberland
Wed, Sept. 5	4706	Laurel Regional Hospital	Laurel
Wed, Sept. 12	4707	Upper Chesapeake Med.Cntr.	Bel Air
Mon, Sept. 24	4708	St. Mary's Hospital	Leonardtown

Each program begins promptly at 6:00 p.m. and ends at 8:00 p.m. To qualify for the premium discount and CME Credits, you must participate in the entire program.

### OBJECTIVES:

Upon completion of this live activity, participants will be better able to:

- Identify areas of risk in the primary care practice setting through an analysis of closed medical malpractice claims
- Discuss strategies to limit liability risk exposure and improve patient outcomes in the process



## OPHTHALMOLOGY

*Presented by Alan Malouf, M.D. and Neal Brown, Esquire*

The program for 2012 will feature a discussion of several closed claims scenarios relevant to practicing Ophthalmologists. Participants will also learn effective strategies to assist them in avoiding/mitigating the risk of malpractice litigation.

DATE	CODE	FACILITY	LOCATION
Mon, March 26	4716	MEDICAL MUTUAL	Hunt Valley
Thu, May 31	4717	Chase Suite Hotel	Rockville
Wed, June 27	4718	Laurel Regional Hospital	Laurel
Wed, August 8	4719	MEDICAL MUTUAL	Hunt Valley

Each program begins promptly at 6:00 p.m. and ends at 8:00 p.m. To qualify for the premium discount and CME Credits, you must participate in the entire program.

### OBJECTIVES:

Upon completion of this live activity, participants will be better able to:

- Identify system-specific problems that can lead to a poor patient outcome
- Understand ophthalmologic risk issues through the analysis of closed medical malpractice cases
- Discuss specific strategies to reduce liability and improve patient outcomes

## CARDIOLOGY

*Presented by William Oetgen, M.D. and Frank Flannery, M.D., J.D.*

The program for 2012 will feature a discussion of several closed claims scenarios relevant to practicing cardiologists. Participants will also learn effective strategies to assist them in avoiding/mitigating the risk of malpractice litigation and preventing patient injury.

DATE	CODE	FACILITY	LOCATION
Tue, March 6	4733	The Meeting House	Columbia
Wed, April 4	4734	Holy Cross Hospital	Silver Spring
Wed, May 9	4735	Colony South Hotel	Clinton
Wed, June 6	4736	DoubleTree Hotel	Annapolis
Tue, August 28	4737	MEDICAL MUTUAL	Hunt Valley
Wed, Sept. 19	4738	Holiday Inn & Conf. Cntr.	Frederick

Each program begins promptly at 6:00 p.m. and ends at 8:00 p.m. To qualify for the premium discount and CME Credits, you must participate in the entire program.

### OBJECTIVES:

Upon completion of this live activity, participants will be better able to:

- Identify risk issues affecting the practice of cardiology through the analysis of closed medical malpractice claims
- Discuss risk management strategies to reduce liability and improve patient outcomes

## SPECIALTY SPECIFICS

### OB/GYN

*Presented by Steven Berlin, M.D. and Christine Davenport,  
MEDICAL MUTUAL Claims Representative*

This specialty program will focus on medical malpractice issues relative to the practice of OB/GYN. A discussion of closed claims will be utilized to illustrate liability exposures and recommendations for avoidance and/or mitigation of those risks.

DATE	CODE	FACILITY	LOCATION
Tue, April 10	4739	MEDICAL MUTUAL	Hunt Valley
Mon, May 7	4740	The Meeting House	Columbia
Tue, June 26	4741	Suburban Hospital	Bethesda
Tue, July 24	4742	Chase Suite Hotel	Rockville
Mon, Oct. 1	4743	MEDICAL MUTUAL	Hunt Valley

Each program begins promptly at 6:00 p.m. and ends at 8:00 p.m.  
To qualify for the premium discount and CME Credits, you must participate in the entire program.

### OBJECTIVES:

Upon completion of this live activity, participants will be better able to:

- Discuss the ACOG study results
- Identify risks and solutions for laparoscopic injury
- Review areas of risk concerning shoulder dystocia

### PEDIATRICS

*Presented by Kenneth Harkavy, M.D., and John Sly, Esquire,  
of Waranch and Brown, LLC*

This new program will focus on medico-legal issues affecting pediatric practices today, utilizing an interactive discussion of several closed pediatric medical malpractice cases.

DATE	CODE	FACILITY	LOCATION
Wed, March 14	4728	MEDICAL MUTUAL	Hunt Valley
Thu, April 12	4729	The Meeting House	Columbia
Wed, May 2	4730	Holy Cross Hospital	Silver Spring
Thu, July 19	4731	Holiday Inn & Conf. Cntr.	Frederick
Wed, August 29	4732	DoubleTree Hotel	Annapolis

Each program begins promptly at 6:00 p.m. and ends at 8:00 p.m.  
To qualify for the premium discount and CME Credits, you must participate in the entire program.

### OBJECTIVES:

Upon completion of this live activity, participants will be better able to:

- Understand the common causes of malpractice actions and how to prevent medical errors
- Identify risk management and loss prevention strategies through an interactive discussion of closed claims scenarios involving pediatrics

## SPECIALTY SPECIFICS

### EMERGENCY MEDICINE – Duty and Responsibility in Transitions of Care

*Presented by Daniel Kohn, M.D. and Michael Bender, MEDICAL MUTUAL  
Claims Manager*

Liability risks and adverse patient outcomes can result during transitions of care. Those transitions can include patient hand-offs to an oncoming individual or team at shift change; hospital admissions and transfers; and off-campus referrals at time of discharge. Adverse outcomes can result from various miscommunications or mis-matched expectations, as well as systems failures. This course will address these issues and offer strategies for risk reduction and improved patient outcomes.

DATE	CODE	FACILITY	LOCATION
Mon, April 23	4709	The Meeting House	Columbia
Tue, May 22	4710	Holiday Inn & Conf. Cntr.	Frederick
Thu, June 14	4711	Chase Suite Hotel	Rockville
Wed, June 20	4712	MEDICAL MUTUAL	Hunt Valley
Thu, August 30	4713	Best Western Hotel	Lanham
Tue, Sept. 4	4714	DoubleTree Hotel	Annapolis
Thu, Oct. 4	4715	Peninsula Regional Med. Cntr.	Salisbury

Each program begins promptly at 6:00 p.m. and ends at 8:00 p.m.  
To qualify for the premium discount and CME Credits, you must  
participate in the entire program.

### OBJECTIVES:

Upon completion of this live activity,  
participants will be better able to:

- Understand the value of appropriate protocols for transitions of care, and articulate concise referrals and optimal change-of-shift patient hand-offs
- Ensure that referrals, admissions and patient hand-offs are accompanied by clear and timely communication among providers, while involving and updating patients and family members
- Provide seamless, safe and understandable transitions of patient care across shifts



## SURGERY: Special Closed Claim Study Report

*Presented by Steven Berlin, M.D. and Michael Doll, MEDICAL MUTUAL Claims Representative*

In 2011, MEDICAL MUTUAL completed a retrospective study encompassing ten years of surgical malpractice claims involving perforation injuries. This course will provide participants with the results of that study and also utilize a number of the reviewed cases as illustrations of the findings. Recommendations for risk avoidance will be featured. Data from other surgical studies will also be provided for comparison.

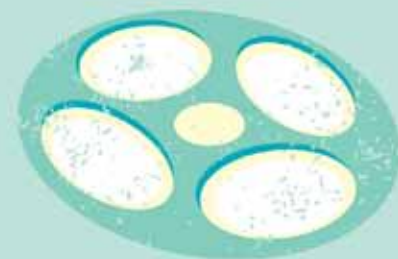
### OBJECTIVES:

Upon completion of this live activity, participants will be better able to:

- Understand the prevalence of perforations in our community
- Discuss the risk factors that lead to perforations
- Understand the need to timely identify surgical perforations once they have occurred

DATE	CODE	FACILITY	LOCATION
Mon, March 26	4720	The Meeting House	Columbia
Thu, April 26	4721	Suburban Hospital	Bethesda
Wed, May 16	4722	MEDICAL MUTUAL	Hunt Valley
Thu, May 24	4723	Colony South Hotel	Clinton
Mon, June 4	4724	MEDICAL MUTUAL	Hunt Valley
Thu, July 26	4725	Peninsula Regional Med. Cntr.	Salisbury
Tue, July 31	4726	Holy Cross Hospital	Silver Spring
Wed, Sept. 19	4727	DoubleTree Hotel	Annapolis

Each program begins promptly at 6:00 p.m. and ends at 8:00 p.m. To qualify for the premium discount and CME Credits, you must participate in the entire program.



# SEMINAR LOCATIONS



## 1. ANNAPOLIS

DoubleTree Hotel  
210 Holiday Court  
410-224-3150  
(MR, MD, C, P, EM, S)

## 2. BEL AIR

Upper Chesapeake  
Medical Center  
500 Upper Chesapeake Drive  
443-643-1000  
(MR, MD, PC)

## 3. BETHESDA

Suburban Hospital  
8600 Old Georgetown Road  
301-896-3100  
(RI, BP, O/G, S)

## 4. CHESTERTOWN

Chester River Hospital Center  
100 Brown Street  
410-778-3300  
(MD)

## 5. CLINTON

Colony South Hotel  
7401 Surratts Road  
301-856-4500  
(C, S)

## 6. COLUMBIA

The Meeting House  
5885 Robert Oliver Place  
410-730-4090  
(MD, C, O/G, P, EM, S)

## 7. CUMBERLAND

Western Maryland Regional  
Medical Center  
12500 Willowbrook Road  
301-723-4200  
(MR, MD, PC)

## 8. EASTON

Comfort Inn  
8523 Ocean Gateway  
410-820-8333  
(MD, BP)

## 9. ELKTON

Union Hospital  
106 Bow Street  
410-398-4000  
(BP)

## 10. FREDERICK

Holiday Inn  
& Conference Center  
5400 Holiday Drive  
301-694-7500  
(MR, BP, PC, C, P, EM)

## 11. HAGERSTOWN

Hagerstown Hotel  
& Convention Center  
1910 Dual Highway  
301-790-3010  
(MD)

## 12. HUNT VALLEY

MEDICAL MUTUAL  
225 International Circle  
410-785-0050  
(MR, MD, RI, BP, PC, OP,  
C, O/G, P, EM, S)

## 13. LANHAM

Best Western Hotel  
5910 Princess Garden Parkway  
301-459-1000  
(MD, PC, EM)

## 14. LAUREL

Laurel Regional Hospital  
7300 Van Dusen Road  
301-725-4300  
(MD, RI, PC, OP)

## 15. LEONARDTOWN

St. Mary's Hospital  
25500 Point Lookout Road  
301-475-8981  
(MD, PC)

## 16. PRINCE FREDERICK

Calvert Memorial Hospital  
100 Hospital Road  
410-535-4000  
(MD, BP)

## 17. ROCKVILLE

Chase Suite Hotel  
1380 Piccard Drive  
301-590-9880  
(MR, RI, OP, O/G, EM)

The Universities at Shady Grove  
9630 Gudelsky Drive  
301-738-6000  
(MD)

## 18. SALISBURY

Peninsula Regional  
Medical Center  
100 East Carroll Street  
410-546-6400  
(MR, MD, PC, EM, S)

## 19. SILVER SPRING

Holy Cross Hospital  
1500 Forest Glen Road  
301-754-3404  
(MR, RI, PC, C, P, S)

## 20. WALDORF

Clarion Inn  
45 St. Patrick's Drive  
301-645-8200  
(MD)

### KEY

- MR = Medical Record Documentation
- MD = Mock Deposition
- RI = Risk Issues in  
Anti-Coagulation Therapy
- BP = Big Problem – Obesity
- PC = Primary Care
- OP = Ophthalmology
- C = Cardiology
- O/G = OB/GYN
- P = Pediatrics
- EM = Emergency Medicine
- S = Surgery

# REGISTRATION INFORMATION

## CME CREDITS/PREMIUM DISCOUNT

### Accreditation Statement:

MEDICAL MUTUAL Liability Insurance Society of Maryland is accredited by the Accreditation Council for Continuing Medical Education (ACCME) to provide continuing medical education for Physicians.

### Designation Statement:

MEDICAL MUTUAL designates this live activity for a maximum of *two (2) AMA PRA Category 1 Credits.*™ Physicians should claim only the credit commensurate with the extent of their participation in the activity.

### Premium Discount:

A 5% Risk Management premium discount will be given on all Year 2013 medical professional liability renewal policies to MEDICAL MUTUAL members who attend any one of these Physician educational programs offered.

**No premium discount will be given to Physicians attending the "Compliance Issues in the Office Setting" office staff program.**

### Important:

You must participate in the entire program to fully benefit from the program and qualify for a 5% premium discount and CME credits. We will count in attendance only those participants who are signed in within the first 30 minutes of the program. Late arrivals or early departures will not be considered present for satisfaction of the premium credit or CME and will be expected to attend a later program to qualify for the premium credit or CME.

## REGISTER ONLINE OR BY MAIL

TELEPHONE REGISTRATIONS ARE NOT ACCEPTED.



### Online:

You can register online at [mmlis.com](http://mmlis.com) and pay on our secure server with a MasterCard, Visa or Discover credit card. Our web site also provides driving directions to each program location.



### Mail:

Select the program desired and complete the rest of the form. Please print clearly! Enclose the form and a check with full payment in the envelope and mail to the address specified below.

### Program Fee:

The first program costs \$50 PER PERSON. If you wish to attend more than one program, each additional program costs \$25 PER PERSON, a savings of 50%!

### Checks Payable To:

Med-Lantic Management Services, Inc.

### Mail To:

Med-Lantic Management Services, Inc.  
P.O. Box 64100  
Baltimore, MD 21298-9134

### Confirmation:

A confirmation notice will be sent to you once we have received your registration.

## PROGRAM SCHEDULE



### Schedule:

Registration and a light dinner are from 5:30 to 6:00 p.m. Program begins promptly at 6:00 and ends at 8:00 p.m. After the start of the session, there is a 30 minute grace period. If you arrive after that time, you will not be admitted to the seminar.



### Dining:

For your convenience, a light dinner is served before each program. If you require a Vegetarian or Kosher meal, please note this on your registration form. Special dietary needs cannot be accommodated at all locations.

## ADDITIONAL INFORMATION

### Late Registration:


Registration is permitted on the day of the program at the program site on a space-available basis. However, some program locations have limited seating capacity and may close to registration weeks or months in advance. We urge you to register early in the seminar season to have the best possible opportunity to attend the program, date and location of your choice.

**Rescheduling:** If you have already made a payment for a seminar and would like to reschedule, we will apply the payment already made for the seminar you choose to attend.

**Cancellation/Refunds:** MEDICAL MUTUAL reserves the right to cancel a scheduled program due to insufficient registration. If a program is cancelled, your payment will be refunded. Due to program commitments for facilities, catering and workbook materials, program fees are non-refundable in the event you are unable to attend.

**Disclosure Policy:** It is the policy of MEDICAL MUTUAL to ensure balance, independence, objectivity and scientific rigor in all its sponsored educational activities. All faculty participating in activities sponsored by MEDICAL MUTUAL are expected to disclose to the program participants any real or apparent conflict(s) of interest related to the content of their presentation(s).

## QUESTIONS



If you need additional information, or have questions about our programs, call our Risk Management Services Department at 410-785-0050 or toll free at 800-492-0193. For current program information, driving directions or to register online, you can also visit the risk management area of our web site at: [mmlis.com](http://mmlis.com).

**2012 RISK MANAGEMENT PROGRAM**Name: \_\_\_\_\_  
*Please print your name as it appears on your policy*

Address: \_\_\_\_\_

City: \_\_\_\_\_

State: \_\_\_\_\_ Zip: \_\_\_\_\_

Phone #: \_\_\_\_\_

Fax #: \_\_\_\_\_

Medical License #: \_\_\_\_\_

Specialty: \_\_\_\_\_

Dietary Needs:  Vegetarian  Kosher\*

\*Not available at all locations.

Date and code number of session(s) you wish to attend:

*Case in Point* Home Study Course Code \_\_\_\_\_

Medical Record Documentation Date \_\_\_\_\_ Code \_\_\_\_\_

Mock Deposition—  
Preparing for the Main Event Date \_\_\_\_\_ Code \_\_\_\_\_Risk Issues in Anti-Coagulation  
Therapy Date \_\_\_\_\_ Code \_\_\_\_\_Big Problem: Risk Issues in  
Treating the Obese Patient Date \_\_\_\_\_ Code \_\_\_\_\_

Specialty Specifics Date \_\_\_\_\_ Code \_\_\_\_\_

For First Program Selected: \$50 per person \_\_\_\_\_

For Each Additional Program: \$25 per person \_\_\_\_\_

TOTAL \_\_\_\_\_

Please print clearly and include your check  
for the correct amount payable to:  
Med-Lantic Management Services, Inc.  
P.O. Box 64100 • Baltimore, MD 21298-9134

These are popular programs and some sessions fill up early. Please register early in the seminar season. A confirmation letter will be sent once your registration has been received. Registration is permitted the day of the session on a space-available basis. All fees are per person—thank you.



DON'T FORGET  
YOU CAN REGISTER  
ONLINE AT  
**MMLIS.COM**

**HOME OFFICE**

Box 8016, 225 International Circle  
Hunt Valley, Maryland 21030  
410-785-0050 | 800-492-0193  
mmlis.com



WEB



EMAIL



PHONE

**FOR MORE INFORMATION** on QR (quick response) Codes, please visit: [mmlis.com/qrcodes](http://mmlis.com/qrcodes)